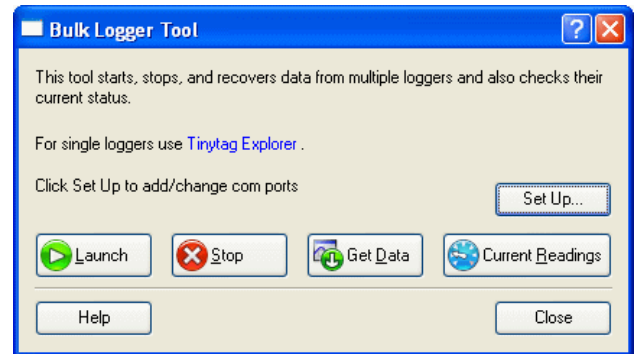


### General

The Tinytag Explorer software is ideal for working with small numbers of data loggers but, increasingly, people are looking to use larger numbers of data loggers in their applications and to make that process easier Gemini Data Loggers has developed the Tinytag Bulk Logger Tool.

This tool allows multiple data loggers to be started or offloaded at the same time, and multiple data loggers to be started with the same settings, significantly speeding up work flow.

This document outlines typical use cases for the Bulk Logger Tool and gives a brief outline of how the product works.



### Applications

#### Building Monitoring

With the increasing need for energy efficiency, the temperature mapping of offices and work places has become more common. To achieve this usually requires a number of data loggers and programming a set of ten or twenty loggers individually can be a length process.

The Bulk Logger Tool allows a user to program multiple loggers at the same time. The first data logger is configured by the user and then successive data loggers are programmed with the same settings. This significantly speeds up the set-up process, as the configuration only has to be entered once, and eliminates the possibility of setting up individual data loggers with different settings.

Users working with large numbers of loggers often wish to view this data in third party programs, such as Microsoft Excel, and to this end the Bulk Logger Tool allows users to select different save formats, such as .xls and .csv, when offloading data.

#### Consignment Monitoring

Temperature data loggers are commonly used to monitor conditions in consignments including food products, cut flowers, pharmaceutical and blood shipments. In a production environment, with shipments leaving a company throughout the day and night, it may not be known exactly when a data logger will be needed and supervisors may not always be available to program a data logger to put into a shipment.

The Bulk Logger Tool allows a supervisor to pre-program a batch of data loggers with the same settings, and to leave them for production staff to start when required using the logger's trigger start feature.

### Different Connection Configurations

The Bulk Logger Tool works equally well with single or multiple data logger connections.

When using a single connection (a cable or inductive pad) data loggers can be programmed or offloaded in turn, one after the other.

Using multiple cables or pads, connected to a computer through a USB hub, allows larger numbers of data loggers to be worked with simultaneously.



## Using the Tinytag Bulk Tool

### Initial Setup

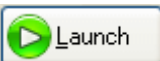
The Bulk Logger Tool is installed at the same time as the Tinytag Explorer software. To start the bulk tool go to:

**Start >> All Programs >> Tinytag Explorer 4.7 >> Tools >> Bulk Logger Tool**

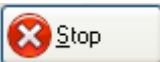
Next, click the **Set Up** button and select the communication ports you wish to use.

### Logger Options

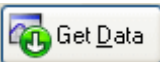
The Bulk Logger Tool allows you to start, stop, get data from and view current readings from batches of data loggers.



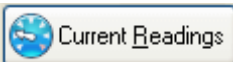
Launch allows you to start a set of data loggers recording. You will be prompted to configure the first data logger plugged in and those settings will then be applied to all subsequent data loggers.



This option allows you to stop a batch of data loggers recording.

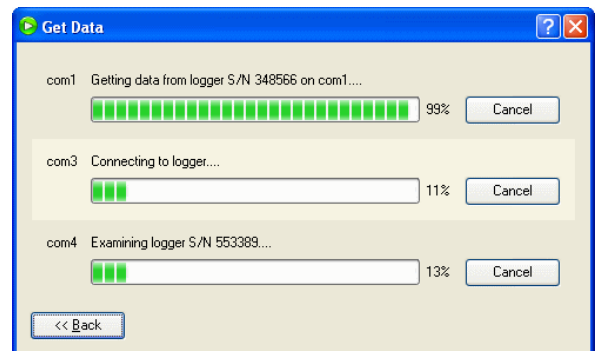


Get Data downloads the data from a logger and saves it automatically in the format of your choice (by default the file format is the Tinytag .ttd file format, but other formats include .xls, .csv and .txt). The file name used is the serial number of the data logger and the date it was offloaded (the data files also include a number - 1, 2, 3 etc - to avoid conflicts if more than one offload is performed on a given date).



This option allows you to see what multiple data loggers are currently reading.

Select the desired operation and then simply plug in each logger in turn. The tool will automatically detect the logger when it is plugged in and perform the requested operation. When the progress bar reaches 100% the logger can be disconnected and the next one plugged in.



## Further Information

Further information on how the Tinytag Bulk Logger Tool works can be found in the Tinytag Explorer help file and further information on Tinytag products can be found on the Tinytag web site:

[www.tinytag.info](http://www.tinytag.info)

If you should have any questions that are not covered by the above, please contact your supplier or Gemini Technical Support.

e: [help@tinytag.info](mailto:help@tinytag.info) t: +44 (0)1243 813009